

Sea Turtle Identification Guide



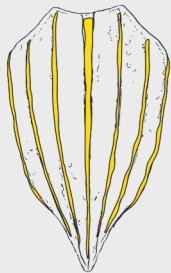
Leatherback
Dermochelys coriacea

CURVED CARAPACE LENGTH:
140 – 190 CM (4.5 – 6.5 FEET)

WEIGHT: 300 – 700 KG

HEAD:
NO HEAD SCALES,
DEPIGMENTED PINK SPOT
ON THE HEAD

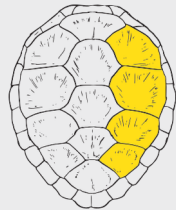
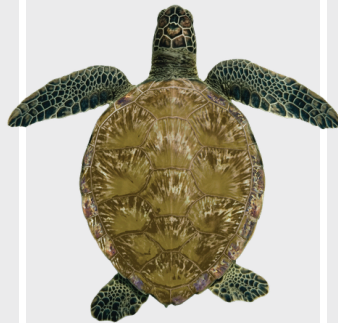
CARAPACE:
LEATHERY SHELL,
NO HARD SCUTES,
7 LONGITUDINAL RIDGES



Green
Chelonia mydas

CURVED CARAPACE LENGTH:
90 – 120 CM (3 – 4 FEET)

WEIGHT: 100 – 250 KG



HEAD:
1 PAIR OF PREFRONTAL
SCALES, ROUNDED HEAD WITH
SERRATED JAWS

CARAPACE:
4 PAIRS OF LATERAL SCUTES,
BROADLY OVAL



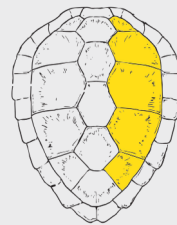
Loggerhead
Caretta caretta

CURVED CARAPACE LENGTH:
80 – 110 CM (2.5 – 3.5 FEET)

WEIGHT: 90 – 180 KG

HEAD:
2 PAIRS OF PREFRONTAL
SCALES, LARGE TRIANGULAR
HEAD

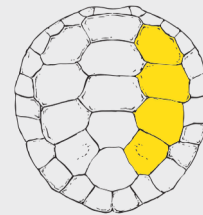
CARAPACE:
5 PAIRS OF LATERAL SCUTES,
LONGER THAN WIDE
CARAPACE



Flatback
Natator depressus

CURVED CARAPACE LENGTH:
80 – 95 CM (2.5 – 3 FEET)

WEIGHT: 70 – 100 KG



HEAD:
1 PAIR OF PREFRONTAL SCALES,
ROUNDED HEAD WITH
SERRATED JAWS

CARAPACE:
4 PAIRS OF LATERAL SCUTES,
BROADLY OVAL



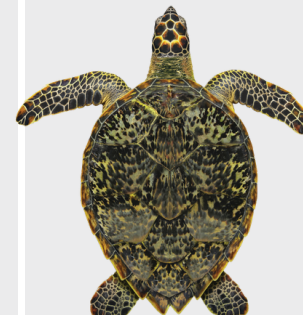
Hawksbill
Eretmochelys imbricata

CURVED CARAPACE LENGTH:
70 – 90 CM (2.3 – 3 FEET)

WEIGHT: 45 – 90 KG

HEAD:
2 PAIRS OF PREFRONTAL
SCALES, NARROW HEAD WITH A
SHARP HOOKED BEAK

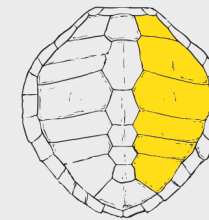
CARAPACE:
4 PAIRS OF LATERAL
OVERLAPPING SCUTES AND
SERRATED POSTERIOR MARGIN



Olive Ridley
Lepidochelys olivacea

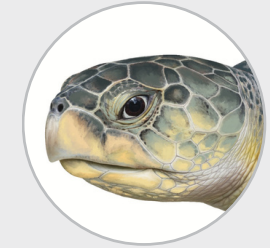
CURVED CARAPACE LENGTH:
60 – 75 CM (2 – 2.5 FEET)

WEIGHT: 35 – 55 KG



HEAD:
2 PAIRS OF PREFRONTAL SCALES,
TRIANGULAR HEAD WITH A SMALL
BIRD LIKE BEAK

CARAPACE:
6-9 PAIRS OF LATERAL SCUTES OFTEN
ASYMMETRICAL, NEARLY CIRCULAR



Kemp's Ridley
Lepidochelys kempii

CURVED CARAPACE LENGTH:
60 – 70 CM (2 – 2.3 FEET)

WEIGHT: 30 – 50 KG

HEAD:
2 PAIRS OF PREFRONTAL
SCALES, TRIANGULAR HEAD

CARAPACE:
5 LATERAL SCUTES,
SOMETIMES 6,
NEARLY CIRCULAR

